

DIMENSION 4 (D4) ASSEMBLY INSTRUCTIONS Part 2

Page

Accessories

44	D4 Isolation Screen Single sided Fabric/Metal
45	D4 Isolation Screen Double sided Fabric
46	D4 Isolation Screen Double sided Metal
47	D4 Isolation Screen Double sided Fabric w/ Elect
48	D4 Isolation Screen Double sided Metal w/ Elect
49	D4 CRT Monitor Platform (25 LB or 75 LB capacity)
50	D4 Part Cup Rack 9 & 12 Bin
51	D4 Universal CPU Holder
52	D4 Ergo Tool Trolley System
52	D4 Solder Spool Rail
53	D4 Ergo Tool Trolley System HD
54	D4 Deluxe Document Holder
55	D4 Footrest Tube
56	D4 Frame Mounted Flip-Up Ergonomic Footrest
57	D4 Ergo Foot pan
58 & 59	D4 Ergo Slide Rail System



WARNING:

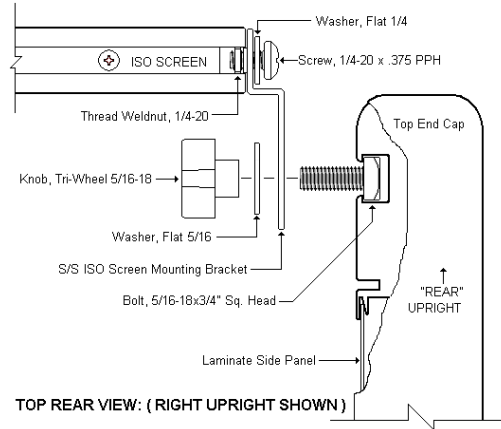
ALL PARTICLE BOARD USED IN IAC INDUSTRIES PRODUCTS ARE SOURCED ONLY FROM VENDORS THAT ARE CARB ATCM PHASE 2 AND TSCA TITLE VI COMPLIANT WITH VALID CERTIFICATES. Drilling, Sawing, Sanding or Machining Wood products can expose you to wood dust, a substance known to the state of California to cause cancer. Avoid inhaling dust generated from wood products or use a dust mask to other safeguards for personal protection. This product can expose you to chemicals, including formaldehyde, which is known to the state of California to cause cancer, and methanol, which is known to the state of California to cause birth defects or other reproductive harm. For more information please visit, www.P65WARNINGS.CA.GOV/WOOD. COPY OF VENDOR CERTIFICATE AVAILABLE UPON REQUEST.

D4 Isolation Screen Single Sided Fabric & Metal

ITEM	DESCRIPTION	QTY
1	ISO Screen Sub-Assembly	1

HARDWARE KIT HWR222

ITEM	DESCRIPTION	QTY
A	ISO Screen Bracket S/S	4
B	Knob Tri-Wheel 5/16-18	8
C	Washer 5/16 Flat	8
D	Washer 1/4 Flat	4
E	Bolt 5/16 X .75 SQH	8
F	Screw 1/4-20 X .375 PPH	4
G	Weldnut 1/4 -20 Tab	4

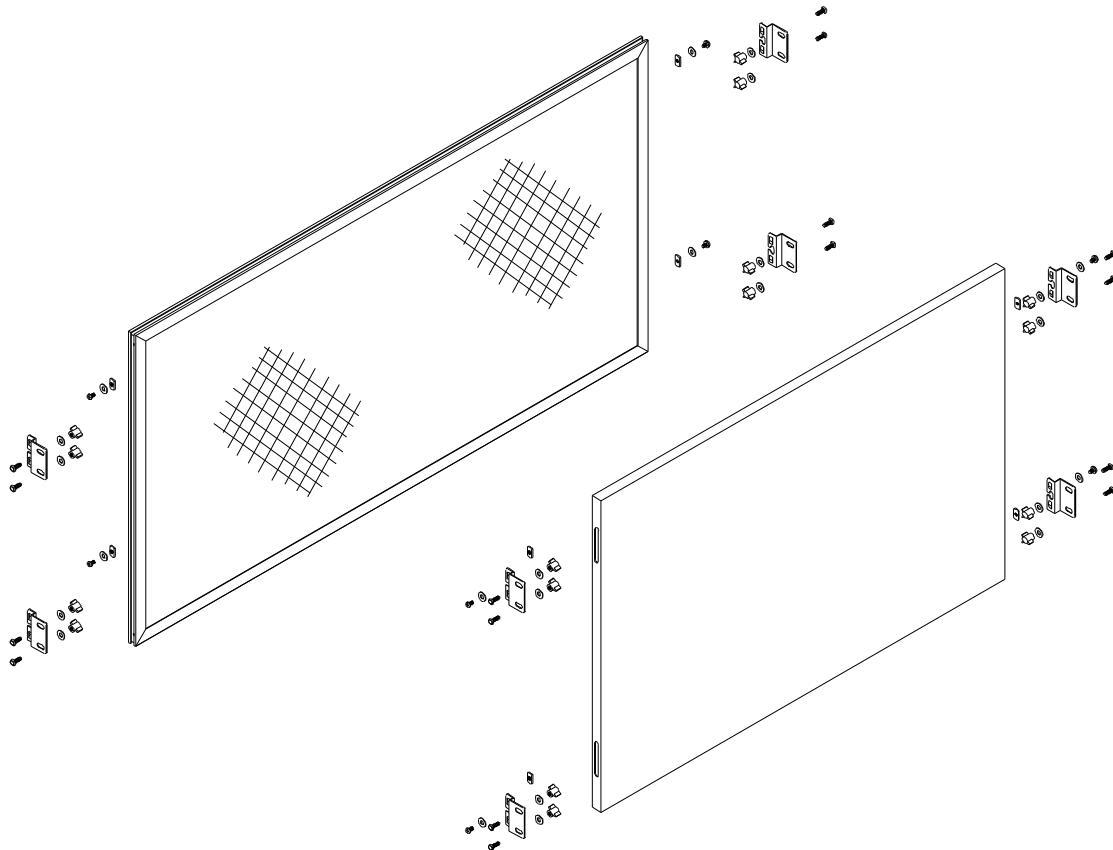


Step 1:

Thread Phillips screw item F with 1/4" washer item D into weldnut item G. Fit the weldnut into the side channel of the isolation screen frame and "finger" tighten into place so that it stays in place. Repeat this for all four Phillips screws.

Step 2:

Thread square head bolts item E with 5/16" washers item C into Isolation screen brackets and knob tri-wheels item B as shown. Install the S/S isolation screen brackets in the desired locations into and feed the square head bolts into channel of the uprights.

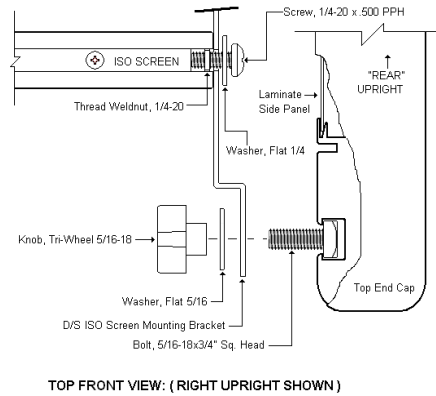


D4 Isolation Screen Double Sided Fabric

ITEM	DESCRIPTION	QTY
1	ISO Screen Sub-Assembly	1

HARDWARE KIT HWR223

ITEM	DESCRIPTION	QTY
A	ISO Screen Bracket D/S w/o Elect	4
B	Knob Tri-Wheel 5/16-18	4
C	Washer 5/16 Flat	8
D	Washer 1/4 Flat	4
E	Bolt 5/16-18 X .75 SQH	8
F	Screw 1/4-20 X .50 PPH	4
G	Weldnut 1/4 -20 Tab	4



Step 1:

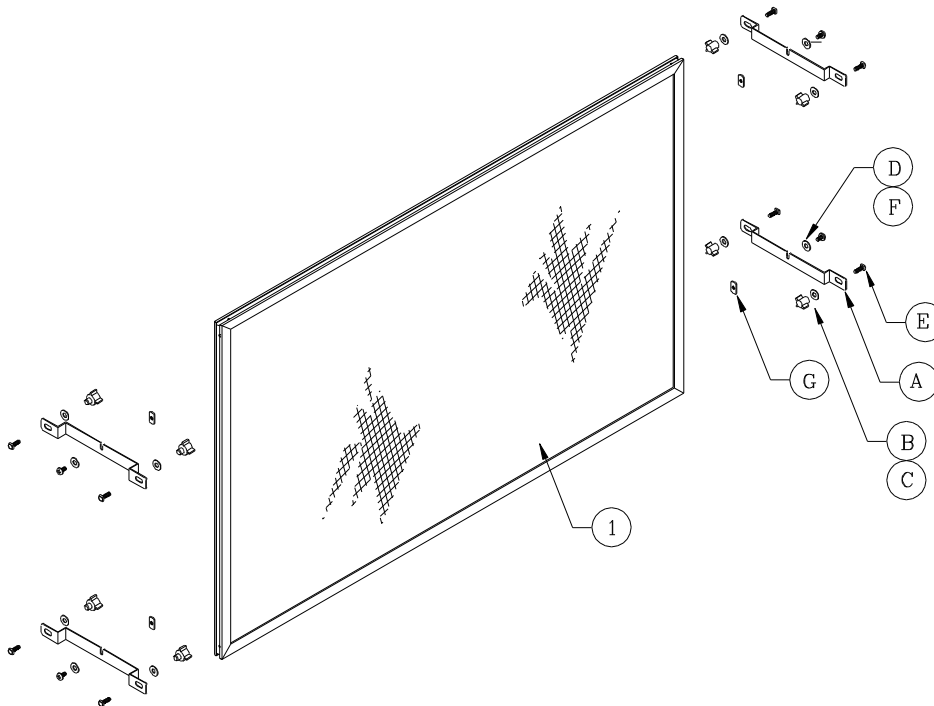
Install the square head bolts into the isolation screen mounting brackets as shown. Place the 5/16" flat washer over the bolt and thread the tri-wheel knob onto the bolt. Do not tighten. Choose the desired location of the isolation screen and attach the mounting brackets to the workstation uprights accordingly by feeding the square head bolts into the nut channel of the uprights, sliding the brackets into place and tightening the tri-wheel knobs.

Step 2:

Thread the 1/4-20 x .625 Phillips screws item F with 1/4" washer item D into weldnut item G. Fit the weldnuts and screws into the side channels of the isolation screen frames and slide them to the desired location. These screws must be located so that they are aligned with the brackets mounted to the workstation. Tighten these screws into the channel so they do not move. NOTE: these screws will not tighten all the way into the channel thus creating a post that will hang on the brackets mounted to the workstation. Repeat this for all four Phillips screws.

Step 3:

Install the isolation screen by carefully lifting it into place so that the Phillips screws are above the mounting brackets and are fitted into the notches of the mounting brackets. Let the isolation screen gently drop into place. If all the Phillips screws do not bottom out in the notches of the mounting brackets loosen the tri-wheel knobs on the brackets and adjust them as needed.

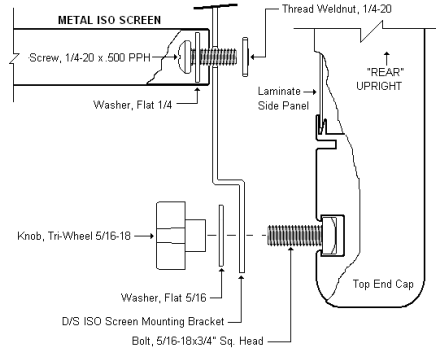


D4 Isolation Screen Double Sided Metal

ITEM	DESCRIPTION	QTY
1	ISO Screen Metal	1

HARDWARE KIT HWR223

ITEM	DESCRIPTION	QTY
A	ISO Screen Bracket D/S w/o Elect	4
B	Knob Tri-Wheel 5/16-18	4
C	Washer 5/16 Flat	8
D	Washer 1/4 Flat	4
E	Bolt 5/16-18 X .75 SQH	8
F	Screw 1/4-20 X .50 PPH	4
G	Weldnut 1/4 -20 Tab	4



TOP FRONT VIEW: (RIGHT UPRIGHT SHOWN)

Step 1:

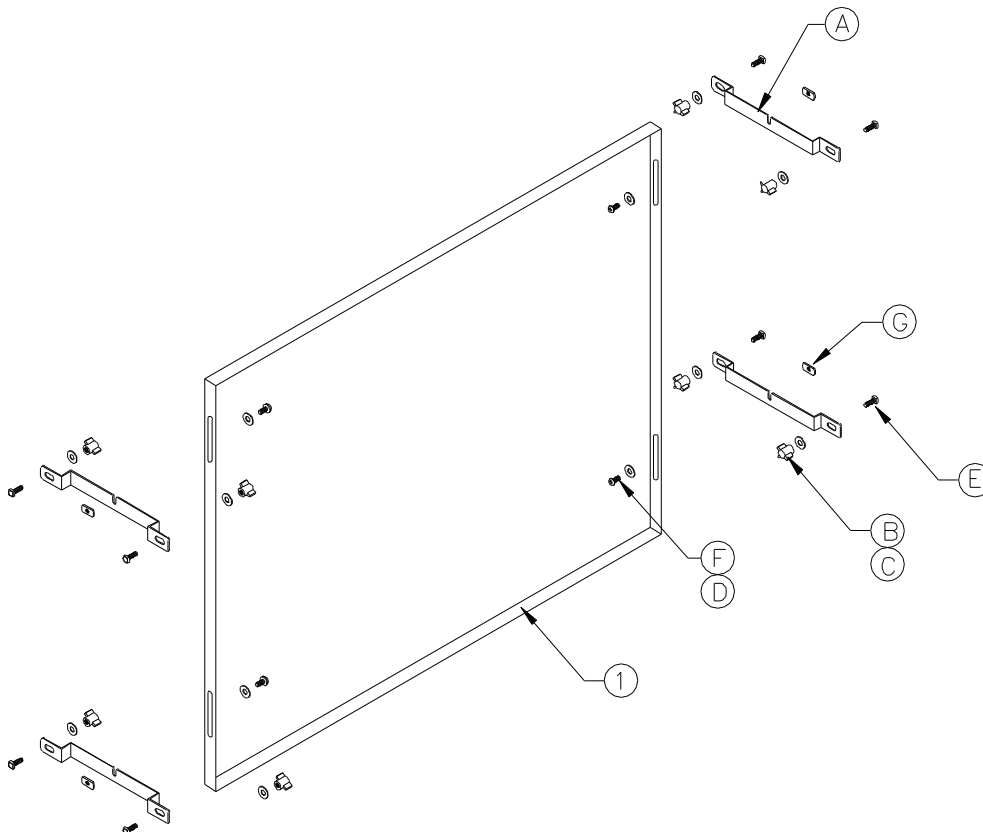
Install the square head bolts into the isolation screen mounting brackets as shown. Place the 5/16" flat washer over the bolt and thread the tri-wheel knob onto the bolt. Do not tighten. Choose the desired location of the isolation screen and attach the mounting brackets to the workstation uprights accordingly by feeding the square head bolts into the nut channel of the uprights, sliding the brackets into place and tightening the tri-wheel knobs.

Step 2:

Thread the 1/4-20 x .625 Phillips screws item F with 1/4" washer item D through the slots in the metal isolation screen and into weldnut item G as shown. Do not tighten.

Step 3:

Install the isolation screen by carefully lifting it into place so that the Phillips screws and the attached weld nuts are above the mounting brackets and are fitted into the notches of the mounting brackets. Let the isolation screen gently drop into place. Adjust the isolation screen vertically to the desired location and tighten the Phillips screws to hold it in place.

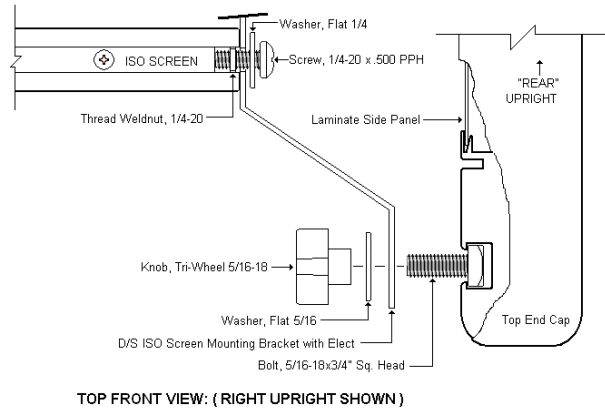


D4 Isolation Screen Double Sided Fabric with Electrical

ITEM	DESCRIPTION	QTY
1	ISO Screen Sub-Assembly	1

HARDWARE KIT HWR225

ITEM	DESCRIPTION	QTY
A	ISO Screen Bracket D/S with Elect	4
B	Knob Tri-Wheel 5/16-18	8
C	Washer 5/16 Flat	8
D	Washer 1/4 Flat	4
E	Bolt 5/16 X .75 SQH	8
F	Screw 1/4-20 X .50 PPH	4
G	Weldnut 1/4 -20 Tab	4



Step 1:

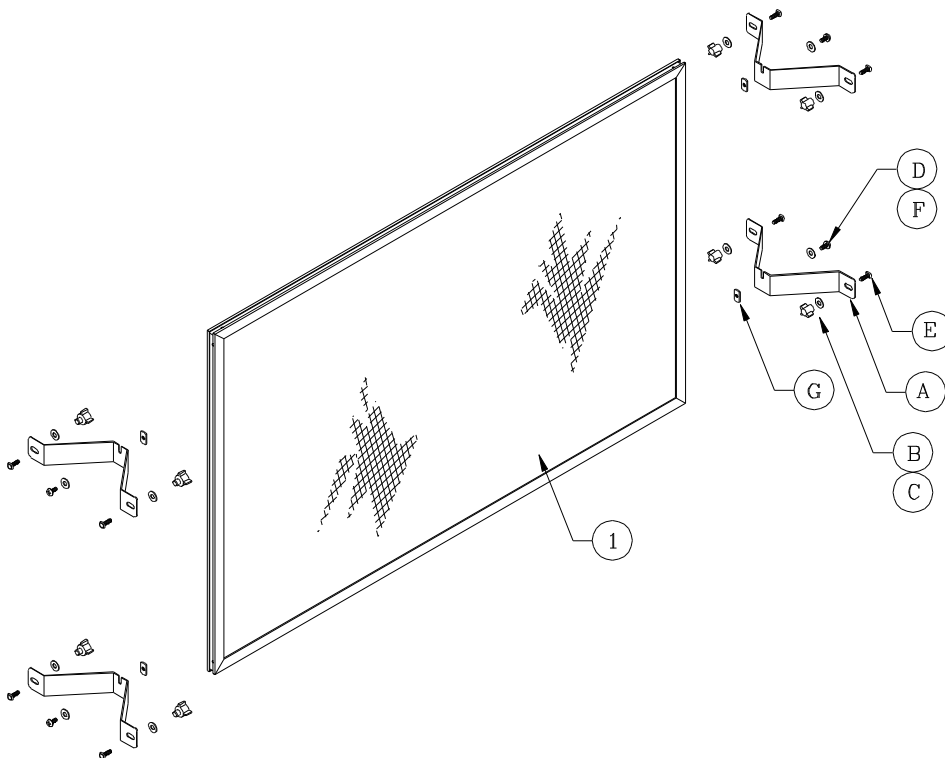
Install the square head bolts into the isolation screen mounting brackets as shown. Place the 5/16" flat washer over the bolt and thread the tri-wheel knob onto the bolt. Do not tighten. Choose the desired location of the isolation screen and attach the mounting brackets to the workstation uprights accordingly by feeding the square head bolts into the nut channel of the uprights, sliding the brackets into place and tightening the tri-wheel knobs.

Step 2:

Thread the 1/4-20 x .625 Phillips screws item F with 1/4" washer item D into weldnut item G. Fit the weldnuts and screws into the side channels of the isolation screen frames and slide them to the desired location. These screws must be located so that they are aligned with the brackets mounted to the workstation. Tighten these screws into the channel so they do not move. NOTE: these screws will not tighten all the way into the channel thus creating a post that will hang on the brackets mounted to the workstation. Repeat this for all four Phillips screws.

Step 3:

Install the isolation screen by carefully lifting it into place so that the Phillips screws are above the mounting brackets and are fitted into the notches of the mounting brackets. Let the isolation screen gently drop into place. If all the Phillips screws do not bottom out in the notches of the mounting brackets loosen the tri-wheel knobs on the brackets and adjust them as needed.

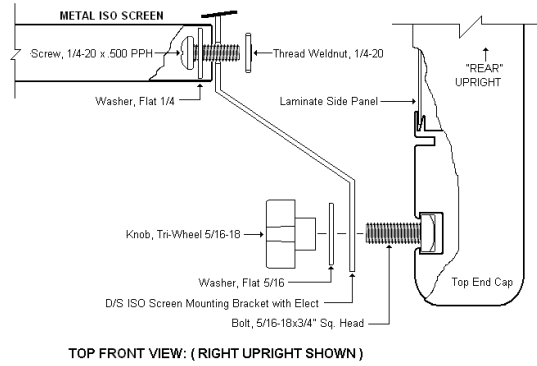


D4 Isolation Screen Double Sided Metal with Electrical

ITEM	DESCRIPTION	QTY
1	ISO Screen Sub-Assembly	1

HARDWARE KIT HWR225

ITEM	DESCRIPTION	QTY
A	ISO Screen Bracket D/S with Elect	4
B	Knob Tri-Wheel 5/16-18	8
C	Washer 5/16 Flat	8
D	Washer 1/4 Flat	4
E	Bolt 5/16 X .75 SQH	8
F	Screw 1/4-20 X .50 PPH	4
G	Weldnut 1/4 -20 Tab	4



Step 1:

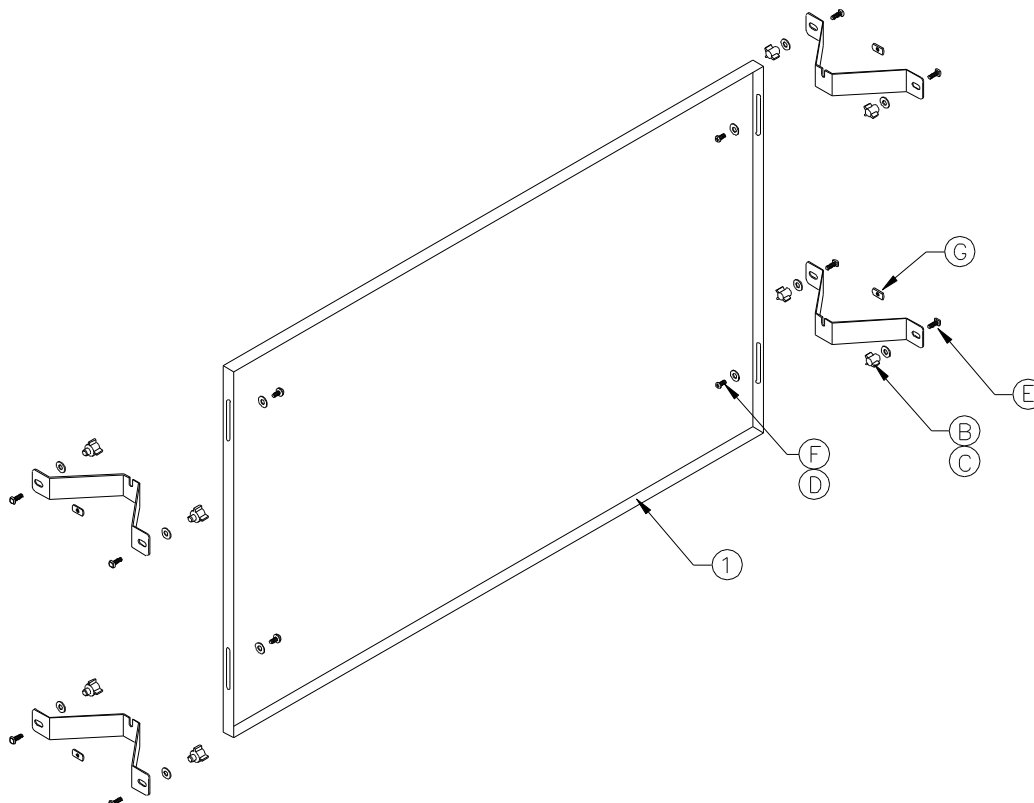
Install the square head bolts into the isolation screen mounting brackets as shown. Place the 5/16" flat washer over the bolt and thread the tri-wheel knob onto the bolt. Do not tighten. Choose the desired location of the isolation screen and attach the mounting brackets to the workstation uprights accordingly by feeding the square head bolts into the nut channel of the uprights, sliding the brackets into place and tightening the tri-wheel knobs.

Step 2:

Thread the 1/4-20 x .625 Phillips screws item F with 1/4" washer item D through the slots in the metal isolation screen and into weldnut item G as shown. Do not tighten.

Step 3:

Install the isolation screen by carefully lifting it into place so that the Phillips screws and the attached weld nuts are above the mounting brackets and are fitted into the notches of the mounting brackets. Let the isolation screen gently drop into place. Adjust the isolation screen vertically to the desired location and tighten the Phillips screws to hold it in place.



D4 CRT Platform Standard Laminate & ESD

ITEM DESCRIPTION	QTY
1 Bracket Assy. (Heavy Duty)	1
2 Swing Arm Assembly 15.75"	1
3 CRT Monitor Platform	1

HARDWARE KIT #HWR255

ITEM DESCRIPTION	QTY
A Nut 5/16-18 Hex Keps	2
B Washer 5/16 Flat	2
C Bolt 5/16-18 x .75 SQH	2
D Plastic Washer	3

Step 1:

Choose whether you prefer left or right hand mounting of your Monitor Platform.

Step 2:

Thread two square head bolts item C through the round mounting holes of the bracket assy (item #1) and secure them with two 5/16 flat washers item B and two 5/16 keps nuts item A leaving them very loose so you can slide them through the upright channels notch in the preferred vertical upright extrusions of your workstation. Adjust to the bracket to the height you want and tighten hardware.

Step 3:

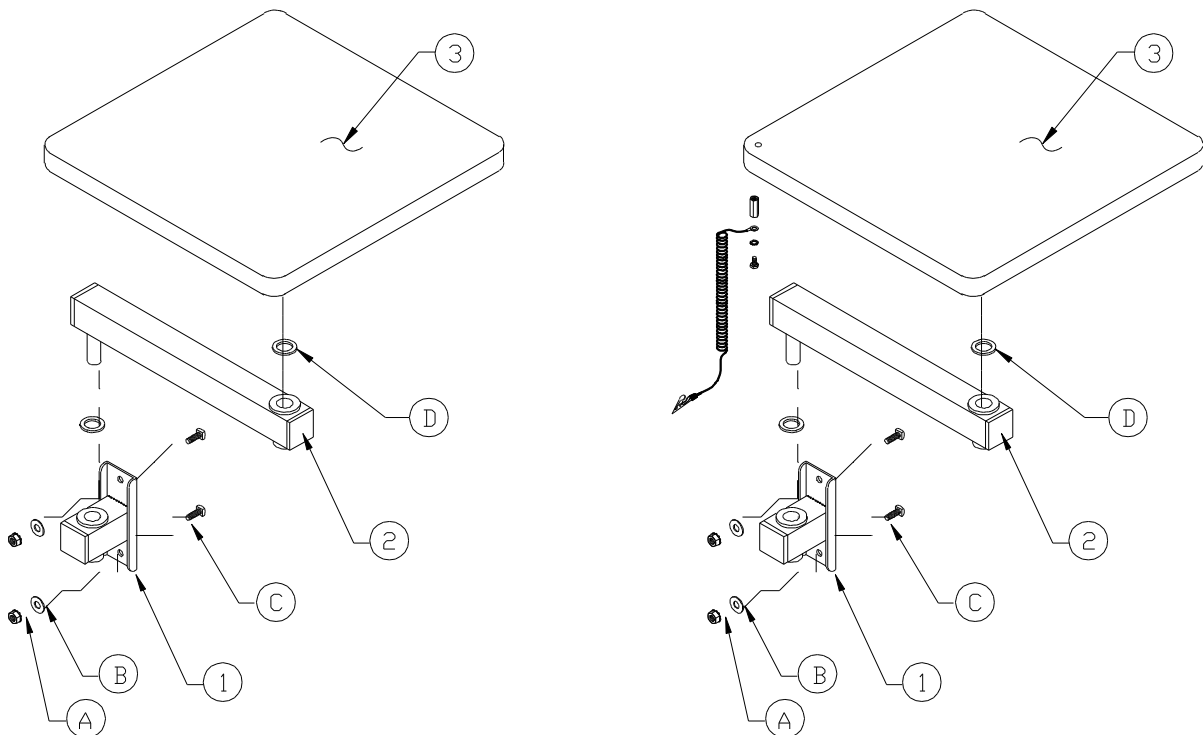
Place a plastic washer item D into the cylinder of the swing arm assembly item #2 and slide the cylinder part of the swing arm into the bracket by securing it into the bushing in the bracket item #1.

Step 4: Place a plastic washer item D into the cylinder of the monitor platform item #3 then set the monitor platform item #3 on to the swing arm assembly item #2 by seating the cylinder securely into the bushing.

Step 5:

Attach ESD grounding kit (HWR 014) to monitor platform for ESD models.

See D4 Assembly Instructions Part 3 for Grounding Instructions & Cautions pages 82 and 83.



D4 Part Cup Rack 9 & 12 Bin

P/N 2012625 & 2012626

ITEM	DESCRIPTION	QTY
1	9 Bin Rack Sub-Assembly	1 (Ref Part #2012625)
2	12 Bin Rack Sub-Assembly	1 (Ref Part #2012626)
3	Swing Arm Mounting Sub-Assembly	1
8	Swing Arm Sub-Assembly 13.75	1

HARDWARE KIT #HWR250

ITEM	DESCRIPTION	QTY
A	Washer 5/16 Flat	2
B	Bolt 5/16-18 X .75 SQH Blk	2
C	Nut 5/16 hex kept Blk	2

Step 1:

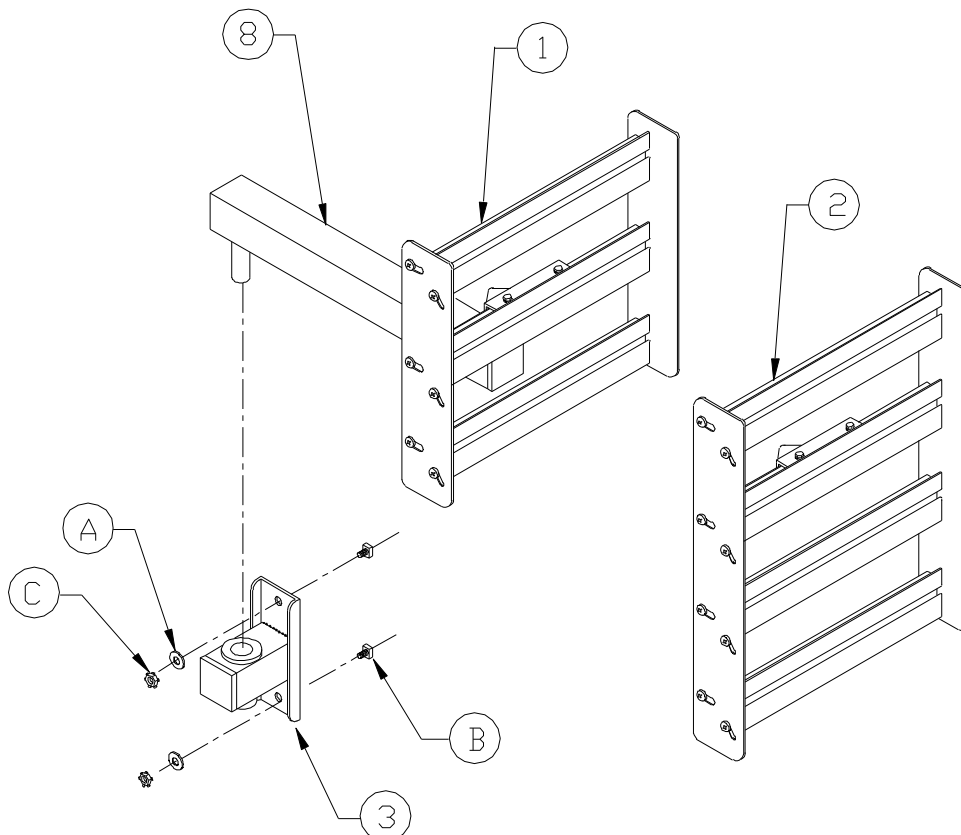
The two vertical uprights that hold up the worksurface assembly have two extrusion channels with two rows of openings that run from top to bottom. Choose whether you prefer left hand or right hand mounting for your Parts Cup Rack and then slide the head of two square head bolts 5/16-18x3/4 item B, into the enlarged notch in one of the extrusion channels.

Step 2:

Insert the threaded section of the bolts through the mounting holes of mounting bracket item # 3 and secure with two 5/16 flat washers item A and two 5/16 hex nuts item C.

Step 3:

Slide the cylinder of 13.75" swing arm item # 8 into the bushing in mounting bracket item # 3. Slip the cylinder of bin rack item # 1 or 2 into the bushing in 13.75" Arm item # 8.



D4 Universal CPU Holder

P/N 2012639

ITEM	DESCRIPTION	QTY
1	CPU Holder Swivel Adjustable Waterloo	1

HARDWARE KIT #HWR303

ITEM	DESCRIPTION	QTY
A	Bracket CPU holder UNI WSM 1.61H	1
B	Screw # 14AB x .625 PPH SMS BLACK	4
C	Screw #8 x .375PPH "P" BLACK	2

Step 1:

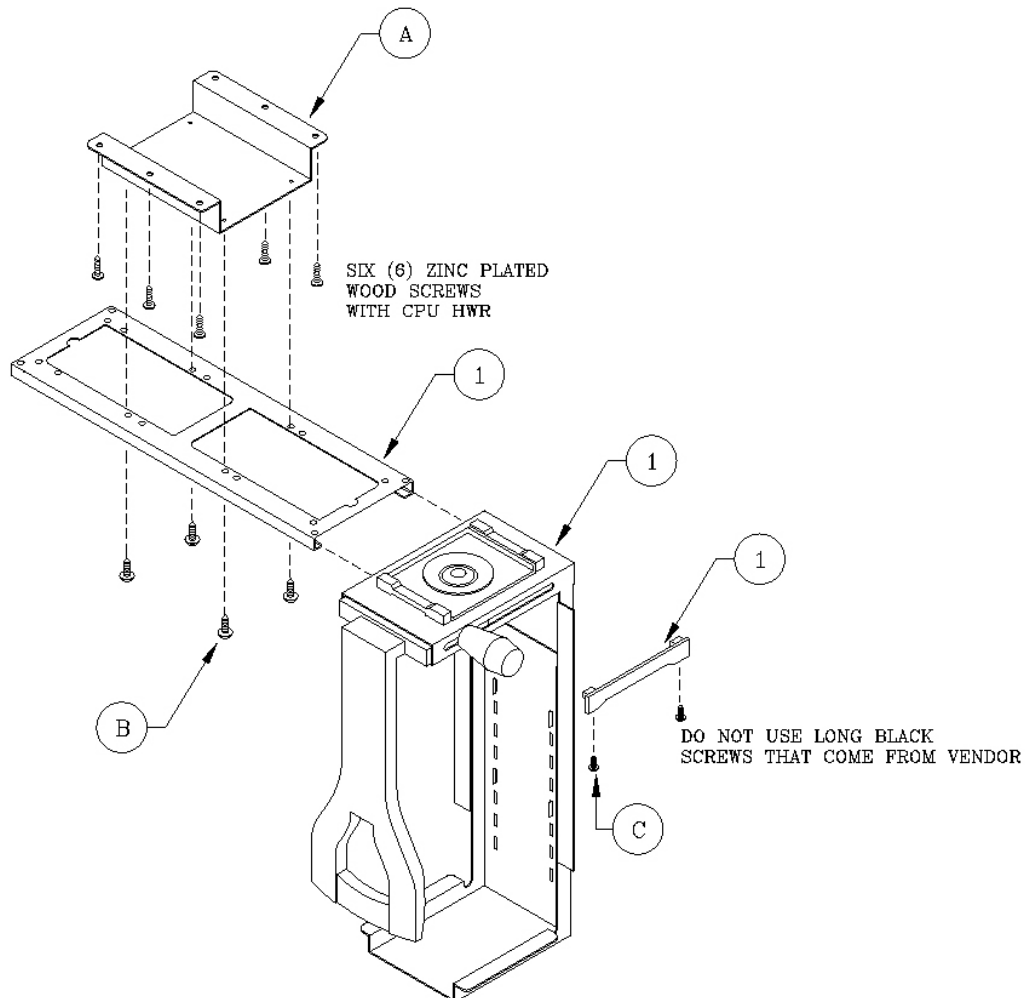
Remove CPU holder and the hardware kit included from the box. Using the six zinc plated wood screws included in the hardware kit of the CPU holder attach the CPU holder WSM bracket item A to the underside of your work surface, positioning it so that the CPU holder will not interfere with other items on the bench.

Step 2:

Attach the CPU holder top slide bracket to the CPU holder WSM bracket item A using four #14AB screws item B making sure the opening in the front of the slide bracket is toward the front of the bench. **Note:** Install all four screws into the holes with equally amount for each screw making sure screws are all the way in. CPU weight will allow unit to slide back and forward freely.

Step 3:

Slide the CPU holder assembly into the opening in the slide bracket and secure using the plastic end stop included with the CPU holder hardware. Attach this end stop using the two small black screws #8 x .375 item C. The CPU holder should slide forward and back smoothly.



D4 Ergo Tool Trolley System

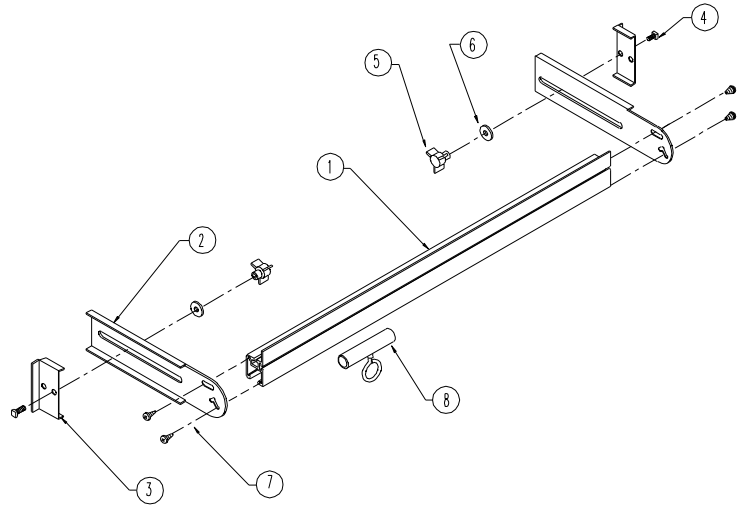
P/N 2012451 (48) 2012452 (60) 2012453 (72)

ITEM	DESCRIPTION	QTY
1	Tool Trolley Rail	1

HARDWARE KIT #HWR249

ITEM	DESCRIPTION	QTY
2	Slide Brkt	2
3	Slide Mtg Brkt	2
4	Bolt 5/16 X 1.25 SQH Blk	2
5	Knob Small Tri-Wheel 5/16-18	2
6	Washer 5/16 Flat BLK	2
7	Screw #14AB .625 PPH SMS Blk	4
8	Delrin Sub-Assembly	1

Note: Part #4 (5/16-18 square head bolt) slides into vertical extrusion in the uprights that hold the worksurface suspended.



D4 Solder Spool Rail

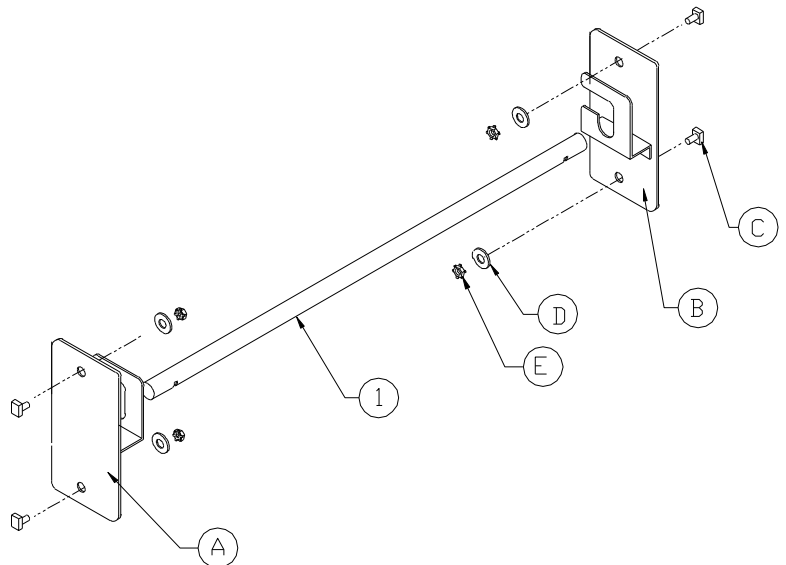
P/N 2012601 (48) 2012602 (60) 2012603 (72)

ITEM	DESCRIPTION	QTY
1	Spool reel rod	1

HARDWARE KIT #HWR290

ITEM	DESCRIPTION	QTY
A	Wire reel holder Brkt LT 1	
B	Wire reel holder Brkt RT1	
C	Bolt 5/16-18 X .75 SQH Blk	4
D	Washer 5/16 Flat Blk	4
E	Nut 5/16 Hex Keps	4

Note: Item #C, square head bolt slides into the vertical extrusion in the worksurface suspended.



D4 Ergo Tool Trolley System HD

P/N 2012461 (48) 2012462 (60) 2012463 (72) 2012464 (84) 2012465 (96)

ITEM	DESCRIPTION	QTY
1	Tool trolley channel weldment	1
2	Toll Trolley side support	2

HARDWARE KIT #HWR826

ITEM	DESCRIPTION	QTY
A	Brkt, D4 tool trolley HD LT	1
B	Brkt, D4 tool trolley HD RT	1
C	Brkt, D4 light mtg tool trolley HD	2
D	Tool trolley car, unistrut w/eye bolt	1
E	Nut, 1/4-20 unistrut long spring N-2-4	10
F	Bolt, 1/4-20 X .750 HHW Black	2
G	Washer, 1/4 Flat Black	16
H	Nut, 5/16-18 hex keps Black	4
J	Bolt, 5/16-18 X .750 SQH	4
K	Bolt, 1/4-20 X 1.00 HH Black	12
L	Nut, 1/4-20 hex keps Black	2
M	Bracket, MTS tool trolley end stop	4
N	Washer, 5/16 flat Black	4

Step 1:

Attach the tool trolley brackets items A and B and the light mounting brackets item C to the tool trolley side channels item 2 by installing the 1/4-20 unistrut nuts item E into the tool trolley side channels and using 1/4 flat washers item G and 1/4 x 1.00 HH bolts item F.

Step 2:

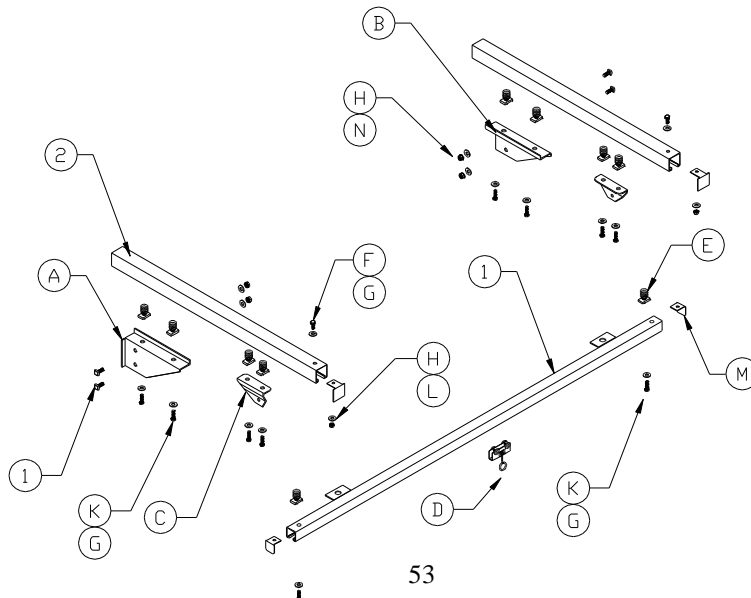
Install the tool trolley side channel assemblies to the D4 uprights using the 5/16-18 x.75 SQH bolts item J and 5/16-18 flat washers item N and 5/16-18 keps nuts item H. Adjust the tool trolley side channel assemblies to the desired height and tighten the hardware.

Step 3:

Install the tool trolley channel item 1 to the tool trolley side channel assemblies by installing 1/4-20 unistrut nuts item E into the ends of the tool trolley side channel assemblies. Install the tool trolley car item D into the tool trolley channel item 1. Attach the tool trolley channel to the side assemblies using the 1/4-20 x 1.00 hex bolts item K, 1/4-20 flat washers item G, tool trolley end stop bracket item M and tighten the hardware.

Step 4:

Attach the front end stops item M on each of the two tool trolley side channel assemblies using hardware 1/4-20 x .75 bolts item F, 1/4-20 flat washers item G and 1/4-20 keps nuts item L. Tighten all hardware.



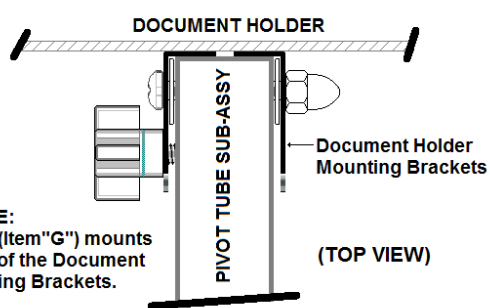
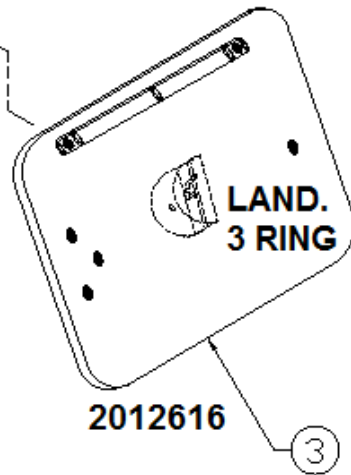
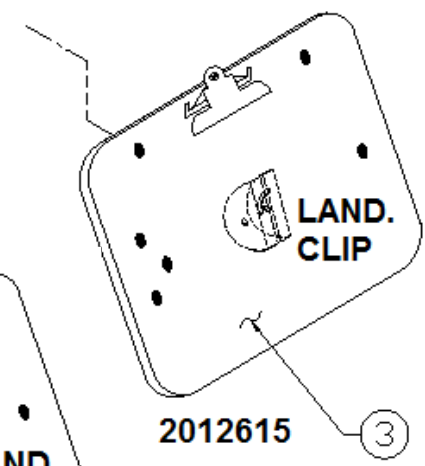
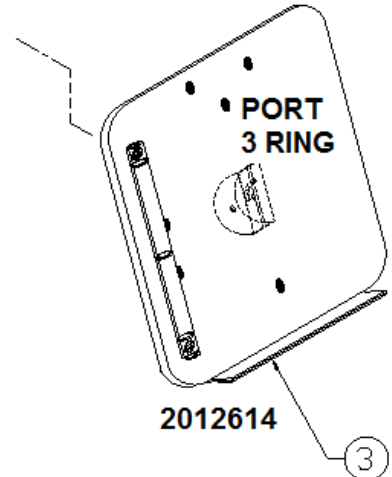
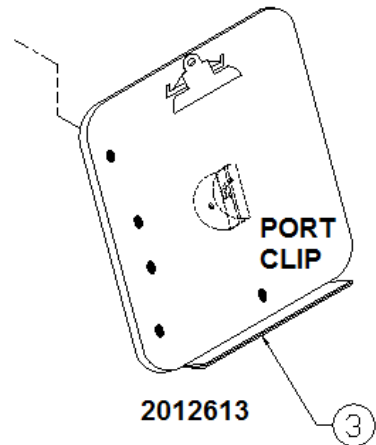
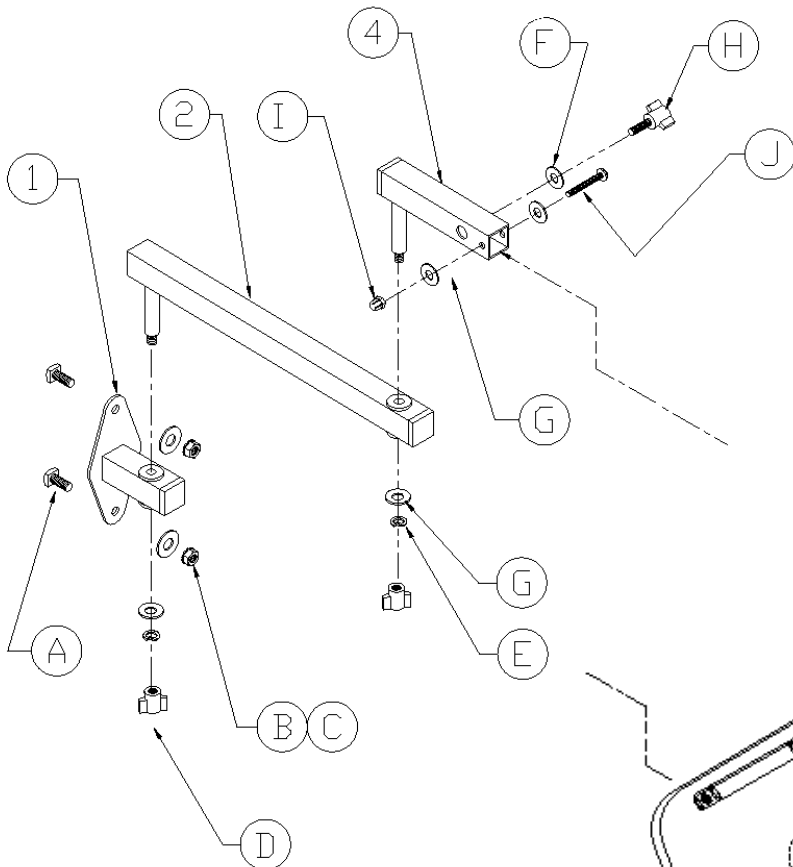
D4 Deluxe Document Holder

*P/N 2012613, 2012614, 2012615, 2012616

ITEM	DESCRIPTION	QTY
1	Doc holder mtg plate sub-assembly	1
2	Doc holder ext. arm sub-assembly 13.75"	1
3	Doc holder pan sub-assembly*	1
4	Doc holder pivot tube sub-assembly 5"	1

HARDWARE KIT #HWR284

ITEM	DESCRIPTION	QTY
A	Bolt 5/16 X .75 SQH Blk	2
B	Washer 5/16 Flat Blk	2
C	Nut 5/16-18 Hex Keps Blk	2
D	Knob, Tri-Wheel 1/4-20 Insert small	2
E	Washer 1/4 Split Lock Blk	2
F	Washer .375 ID .875 OD .062 neoprene	1
G	Washer 1/4 Flat Blk	3
H	Knob 1/4-20 X .750 Tri Wheel Stud Blk	1
I	Nut 1/4-20 X Acorn	1
J	Screw 1/4-20 X 1.50 PPH Blk	1



PLEASE NOTE:
Flat Washers (Item "G") mounts on the inside of the Document Holder Mounting Brackets.

D4 Standard Footrest Tube

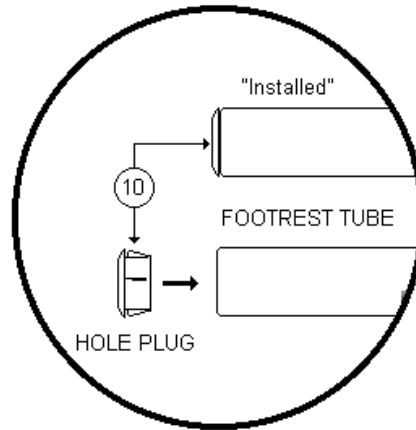
P/N 2012121 (48) 2012122 (60) 2012123 (72)

FOOTREST TUBE

ITEM	DESCRIPTION	QTY
1	Footrest Tube	1

HARDWARE KIT #HWR204

ITEM	DESCRIPTION	QTY
A	Mtg bracket LT	1
B	Mtg bracket RT	1
C	Tube clamp	4
D	Washer 5/16 flat Blk	2
E	Knob small tri-wheel	2
F	Screw 1/4-20 X 1.50 PPH	4
G	Bushing .271 ID X .467 OD	4
H	Bolt 5/16-18 X .75 SQH	2
J	Cap Plug .875 DIA Blk	2



Step 1:

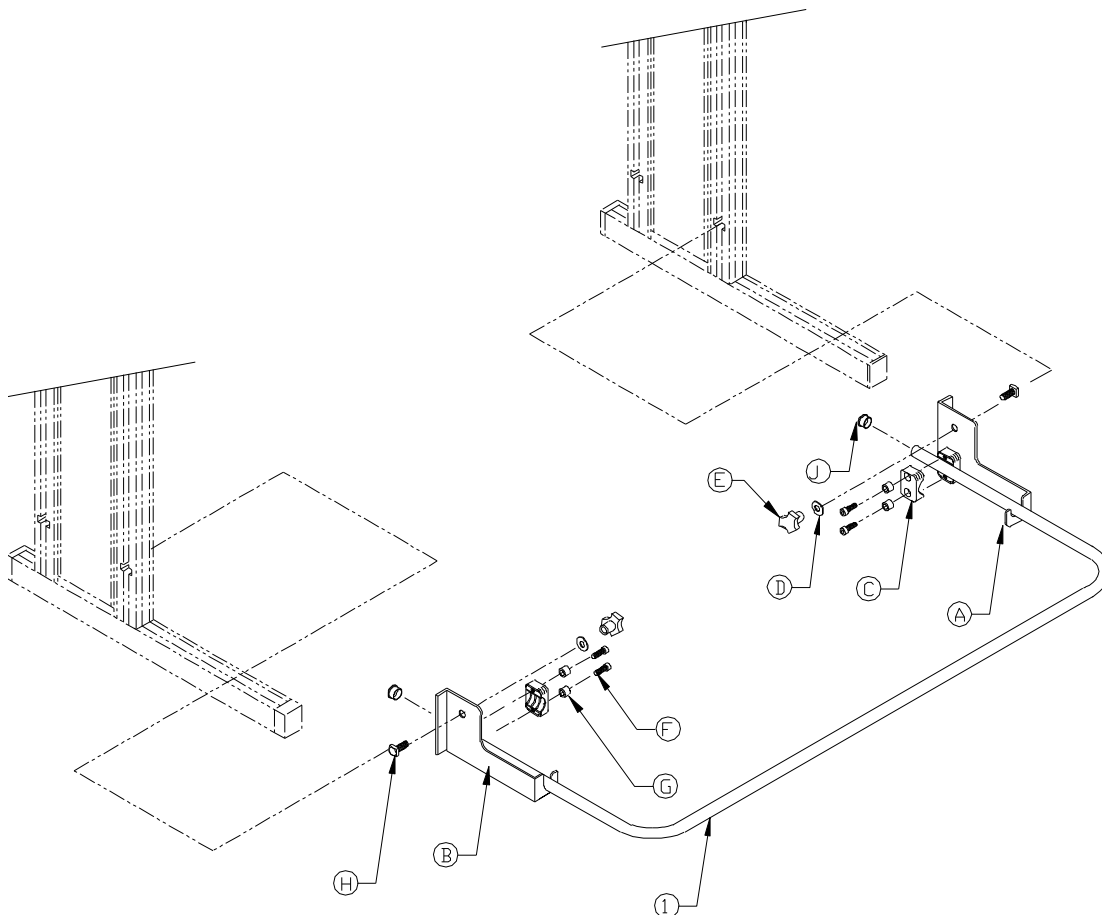
Fasten left and right brackets to upright by sliding the heads of the .75" square head bolts into the front vertical channel in the uprights and securing with flat washer and knob.

Step 2:

Set the Foot rail on the bracket and stabilize it by placing 2 halves of the black plastic tube clamps around each rail, then securing the clamps with the 1/4 split washers and 1.25" screws.

Step 3:

To attach the optional Foot pan use the black plastic tube clamps, and secure the Foot pan to the Foot rail with the clamps, 1/4split washers and the 1.25" screws.



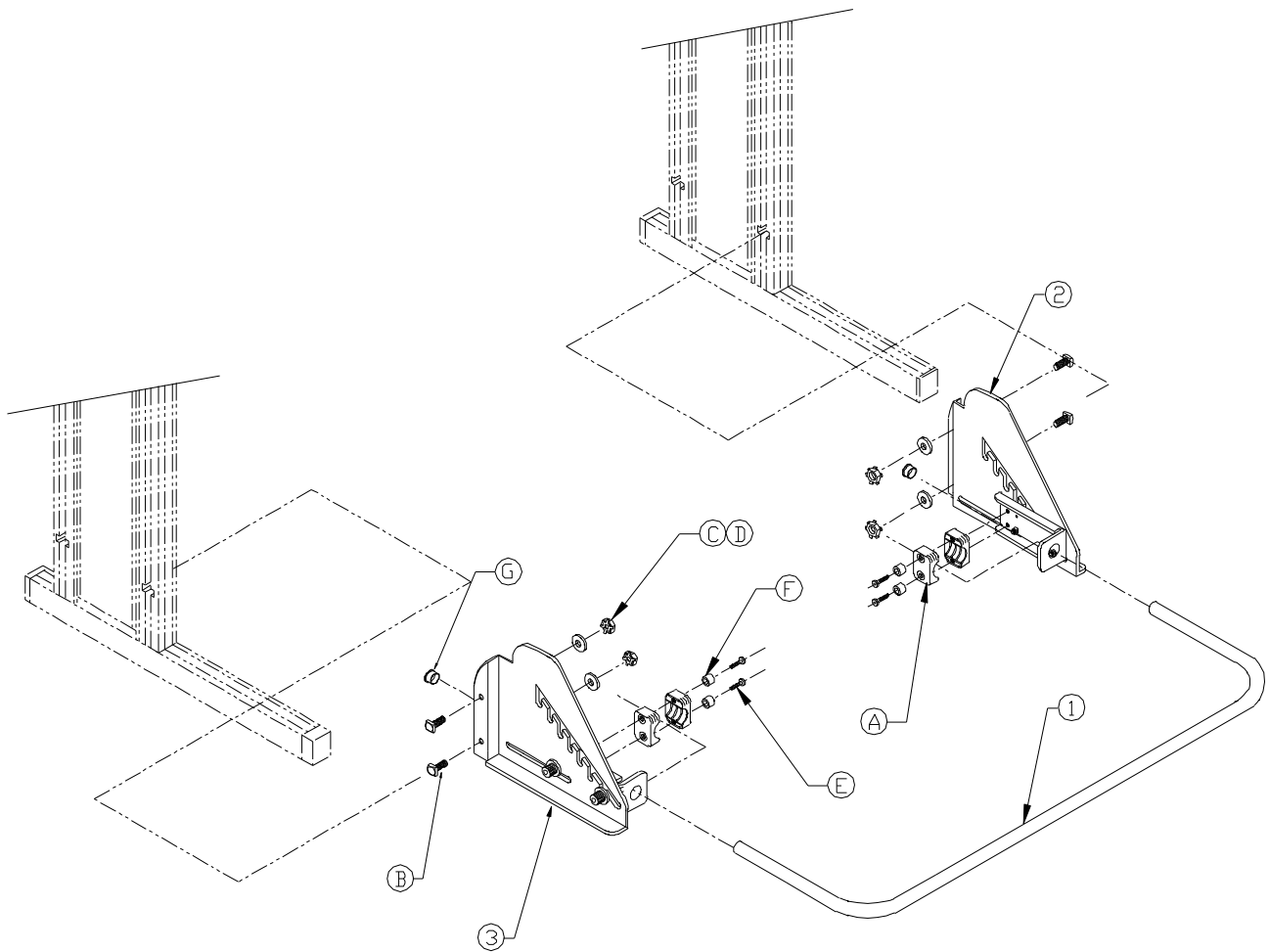
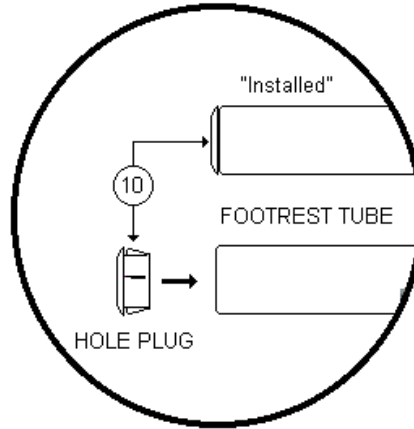
D4 Frame Mounted Flip-Up Ergonomic Footrest

P/N 2012151(48) 2012152 (60) 2012153 (72)

ITEM	DESCRIPTION	QTY
1	Footrest Tube	1
1	Mtg bracket sub-assembly	1
2	Mtg bracket sub-assembly	1

HARDWARE KIT #HWR256

ITEM	DESCRIPTION	QTY
A	Tube clamp 1.00 dia Blk	4
B	Bolt 5/16-18 X .75 SQH Blk	4
C	Washer 5/16 flat BLK	4
D	Nut 5/16-18 hex keps	4
E	Screw 1/4-20 X 1.50 PPH	4
F	Bushing .271 ID X .467 OD	4
G	Cap plug .875 dia Blk	2



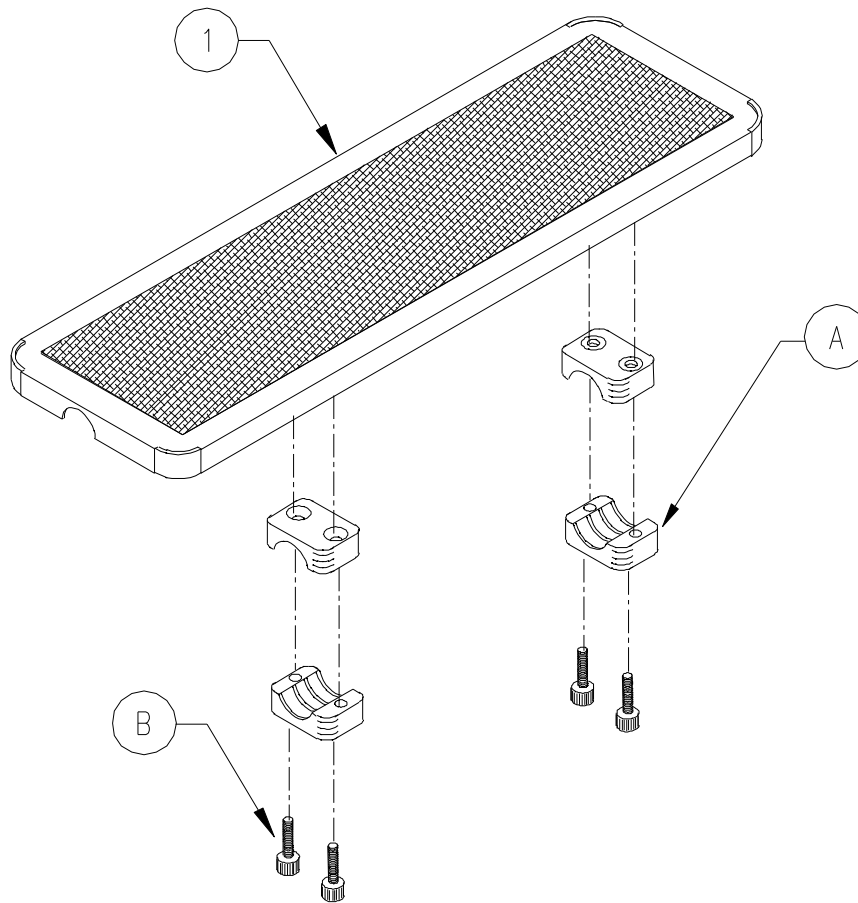
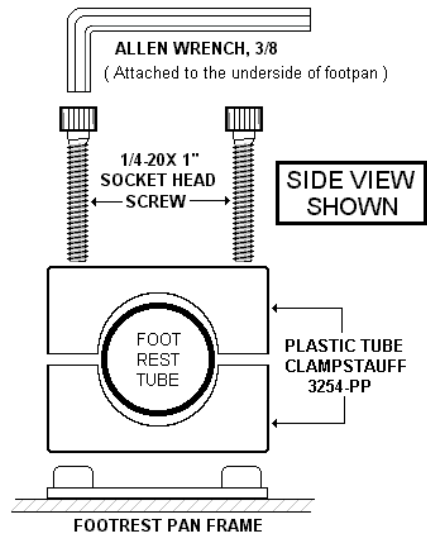
Ergo Footrest Pan

P/N 2012157 (24) 2012158 (36)

ITEM	DESCRIPTION	QTY
1	Footrest pan sub-assembly	1

HARDWARE KIT #HWR269

ITEM	DESCRIPTION	QTY
A	Tune clamp 1.00 dia	4
B	Screw 1/4-20 X 1.125 socket	4



D4 Ergo Slide Rail System

Step 1:

Separate parts by item number. If you are only installing one slide rail unit (instead of multiple units) you do not need item G, C, Q or R. These are used to align multiple units for stability.

Step 2:

Attach black support bracket 28"L, item A to black mounting bracket, item B using 1/4-20x5/8" hex head bolts, item P and flat washers item K. Line up two threaded inserts in the support bracket 28"L with the long slotted slide in the mounting bracket. The open sides of the support bracket 28"L will face towards each other when installed.

Step 3:

To attach each mounting bracket, item B to upright vertical support on the bench, slide the HEADS of two 5/16-18x3/4" square head bolts, item L into the slots in the front vertical channel of the upright. Slip the threaded end of the top square head bolt into the middle of the three holes in the bracket, WHILE AT THE SAME TIME slipping the threaded end of the bottom square head bolt into the wavy slot. Secure with flat washer, item J, and 5/16 hex kept nut item H.

Step 4:

Attach slide rails Item #1 to support brackets 28"L, item A. Use two lock washers and two, 2" bolts for each rail. Slip a lock washer, item N over a 1/4-20x2"L hex head bolt, item M and slide the threaded end of the bolt vertically up through the slot in the support bracket 28"L, threaded end facing up. This part is a little tricky, but just as you poke the bolt through the bottom hole of the slide rail and BEFORE you slide the bolt vertically up through the top hole in the slide rail, slide a nylon tube 1.2", item D over the bolt. This will help align it.

Step 5:

Use the single handle ratchet, item F to tighten down the rails. Rails can be adjusted up or down by loosening the ratchet handle and sliding the rails.

For Multiple Slide Rail Units:

Step 6:

To align slide rails in multiple units, there are four alignment pins - aluminum 1", item G provided in each kit. Crimp the pins slightly with pliers and insert horizontally into the small round holes at the ENDS of the slides rails, leaving 1/2" protruding. Hold the rail firmly while sliding the adjoining rail over the other 1/2" of the pin.

Step 7:

To keep multiple units from wobbling, secure the support brackets 28"L in adjoining slide rail units. There are two; black metal slide rail tube supports 2", item C provided in each kit. Slide a flat washer, item K over a 1/4-20x2.5"L hex head bolt, item Q. Slide the bolt horizontally through the top hole in the outside edge of the support bracket 28"L, threads facing TOWARDS the second slide rail unit. Slip the slide tube support, item C over the bolt, then slip the threaded end of the bolt through the support bracket in the second slide rail unit. Secure with 1/4 flat washer, item K, and 1/4-20 hex kept nut, item R. Repeat the same process for the bottom hole in the Support Bracket 28"L.

See Parts List and Assembly Drawing on next page:

D4 Ergo Slide Rail System

ITEM	DESCRIPTION	QTY
1	Slide rail extrusion	2

HARDWARE KIT #HWR270

ITEM	DESCRIPTION	QTY
A	Slide rail support brkt 28.00L	2
B	Slide rail mtg bracket	2
C	Slide rail spacer tube 2.00L	2
D	Slide rail supt tube 1.2L	4
E	End cap 1.5X1.5 20-14 ga blk	4
F	Handle ratchet 1/4-20 Insert 1.75	4
G	Alignment pin 7/32 DAI X 1.00L	2
H	Nut 5/16-18 hex keps blk	4
J	Washer 5/16 flat blk	4
K	Washer 1/4 flat blk	8
L	Bolt 5/16-18 X .75 SQH blk	4
M	Bolt 1/4-20 X 2.00 HH tap blk	2
N	Washer 1/4 lock split blk	4
P	Bolt 1/4-20 X .75 HHW blk	2
Q	Bolt 1/4-20 X 2.50 HH blk	2
R	Nut 1/4-20 hex keps	2

Note: If you ordered an ESD Slide Rail you will receive hardware kit HWR#288. Instead of HWR#270. It contains parts to ground the rail. See D4 Assembly Instructions Part 3 for Grounding Instructions & Cautions.

