

AirClean Modular Vertical Flow

REV. (042318P65)

IAC INDUSTRIES

3831 S BULLARD AVE., GOODYEAR, AZ 85338
Phone (714) 990-8997 Fax (714) 990-0557
www.iacindustries.com

MVF

Assembly Instructions

TABLE OF CONTENTS OF TEXT INFORMATION

| <u>TITLE</u> | <u>PAGE #</u> |
|--------------------------------------|---------------|
| Damage Claims & Shipping | 2 |
| General Description | 2 |
| Unpacking and Installation | 3 |
| MVF AirClean Assembly | 4-6 |
| MVF AirClean Light Tube Installation | 6-7 |
| MVF AirClean Diffuser Installation | 8 |

Freight Claim Damage:

Your unit must be inspected for visible and concealed as soon as it is received. If the unit is damaged in any way by the carrier, including concealed damage, or because of miss handling during shipment you must file a freight claim with the freight carrier immediately. Taking pictures of any damage when the unit is received will help in documenting the type and extent of the damage and in freight claim process itself.

General Description:

All IAC AirClean Modular Vertical Flow equipment is built to the highest standards of quality and workmanship to meet and perform to the standards of set forth in the IAC AirClean Operation Manual. IAC suggests you read this manual completely prior to assembly, installation and operation of the unit.

Customer Service Contact:

If for any reason you experience a problem with you AirClean unit please contact IAC Industries' customer service at 1-800-989-1422 and ask for technical service for AirClean units.



WARNING:

ALL PARTICLE BOARD USED IN IAC INDUSTRIES PRODUCTS ARE SOURCED ONLY FROM VENDORS THAT ARE CARB ATCM PHASE 2 AND TSCA TITLE VI COMPLIANT WITH VALID CERTIFICATES. Drilling, Sawing,

Sanding or Machining Wood products can expose you to wood dust, a substance known to the state of California to cause cancer. Avoid inhaling dust generated from wood products or use a dust mask to other safeguards for personal protection. This product can expose you to chemicals, including formaldehyde, which is known to the state of California to cause cancer, and methanol, which is known to the state of California to cause birth defects or other reproductive harm. For more information please visit,

www.P65WARNINGS.CA.GOV/WOOD. COPY OF VENDOR CERTIFICATE AVAILABLE UPON REQUEST.

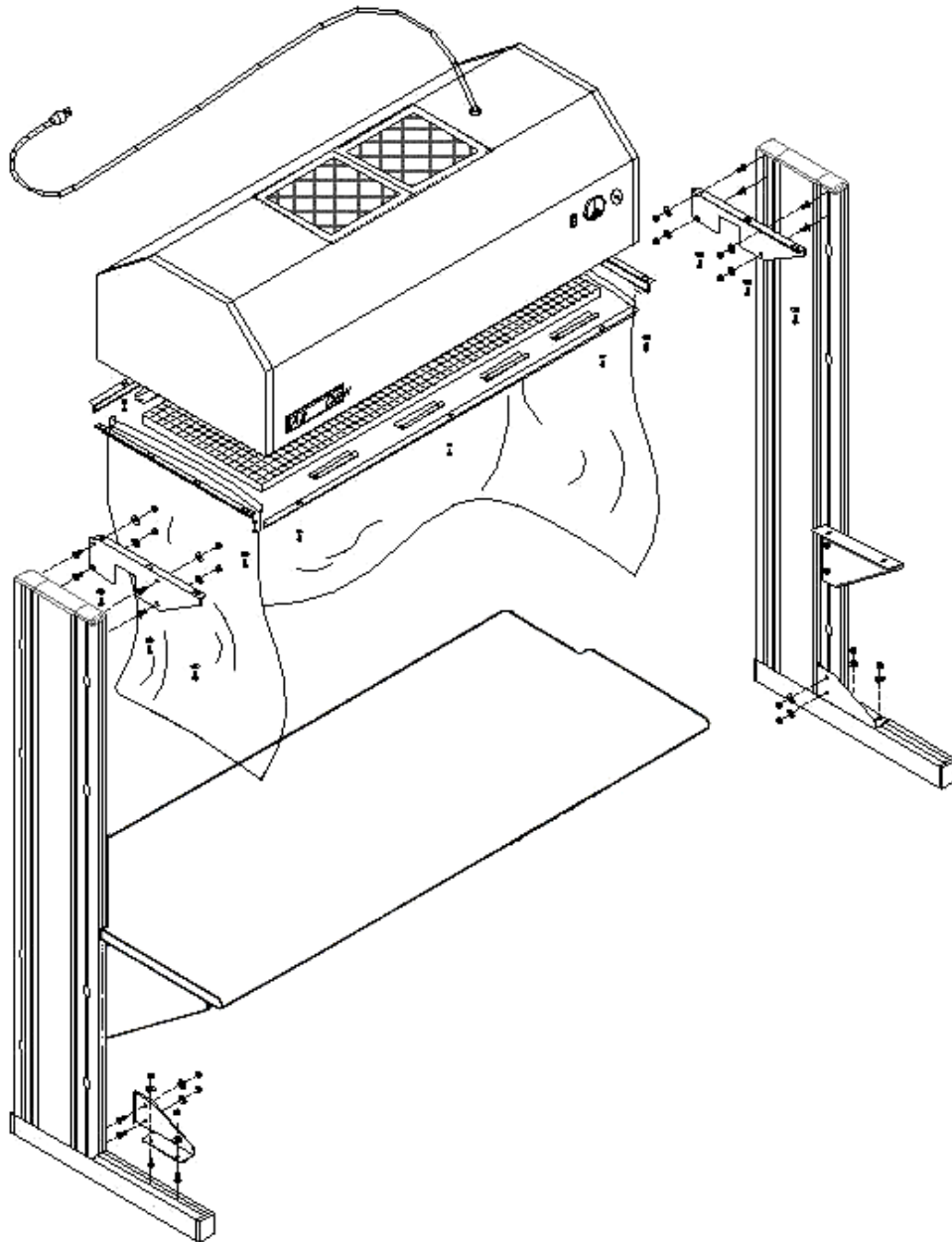
Unpacking and Installation:

All IAC AirClean units are packaged to factory specification which are approved by common carriers and insurance companies. Each AirClean unit is packed to stabilize movement during transit and is protected on all sides by a wooden create structure. Caution must be exercised when unpacking the unit.

After your unit has been transported to the point of assembly and inspected for any damage caused during transit, observe the following procedures:

1. Carefully remove the AirClean unit from it's wooden create structure and examine it for damage.
2. Review all parts to be sure they are all accounted for.

MVF AirClean Exploded View:



MVF AirClean Assembly:

Assembly of MVF AirClean units will take two to four people depending on how the unit is to be erected. Care must be taken during the assembly process to avoid damaging the unit, causing injury to the assemblers or damaging the surrounding area. IAC Industries is not responsible for injuries to assemblers or damage to the unit or the surrounding that may occur during the assembly process. If you have any questions regarding the assembly methods please contact IAC Industries customer service and ask for technical assistance for AirClean Units.

| Item | Description | Qty. | Item | Description | Qty. |
|------|------------------------------|------|------|---------------------------------------|------|
| 1 | MVF Cabinet Sub-Assy | 1 | 6 | MVF Velcro Angle Sub-Assy Front /Rear | 2 |
| 2 | MVF UPRT MTG Bracket RT | 1 | 7 | D4 UPRT Base Supt Bracket RT | 1 |
| 3 | MVF UPRT MTG Bracket LT | 1 | 8 | D4 UPRT Base Supt Bracket LT | 1 |
| 4 | MVF Vinyl Curtain STD / ESD | 1 | 9 | MSF Egg Crate Diffuser | 2 |
| 5 | MVF Vinyl Angle Sub-Assembly | 2 | 10 | Pre-Filter | 1 |

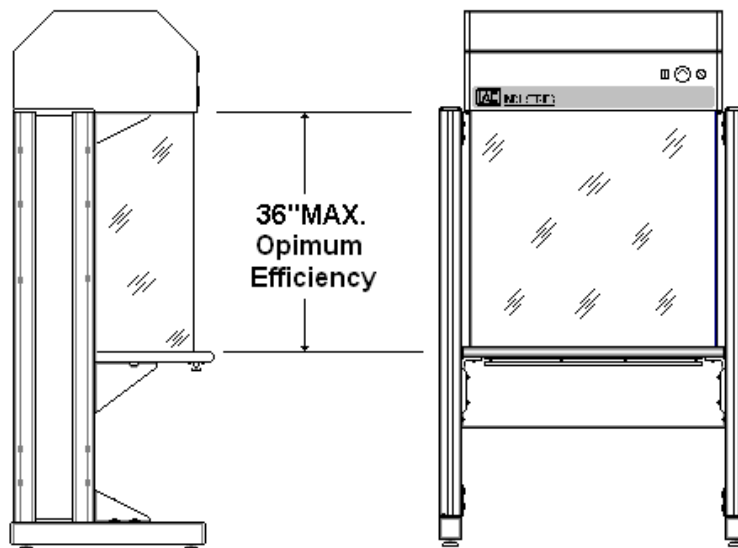
Hardware Kit HWR292

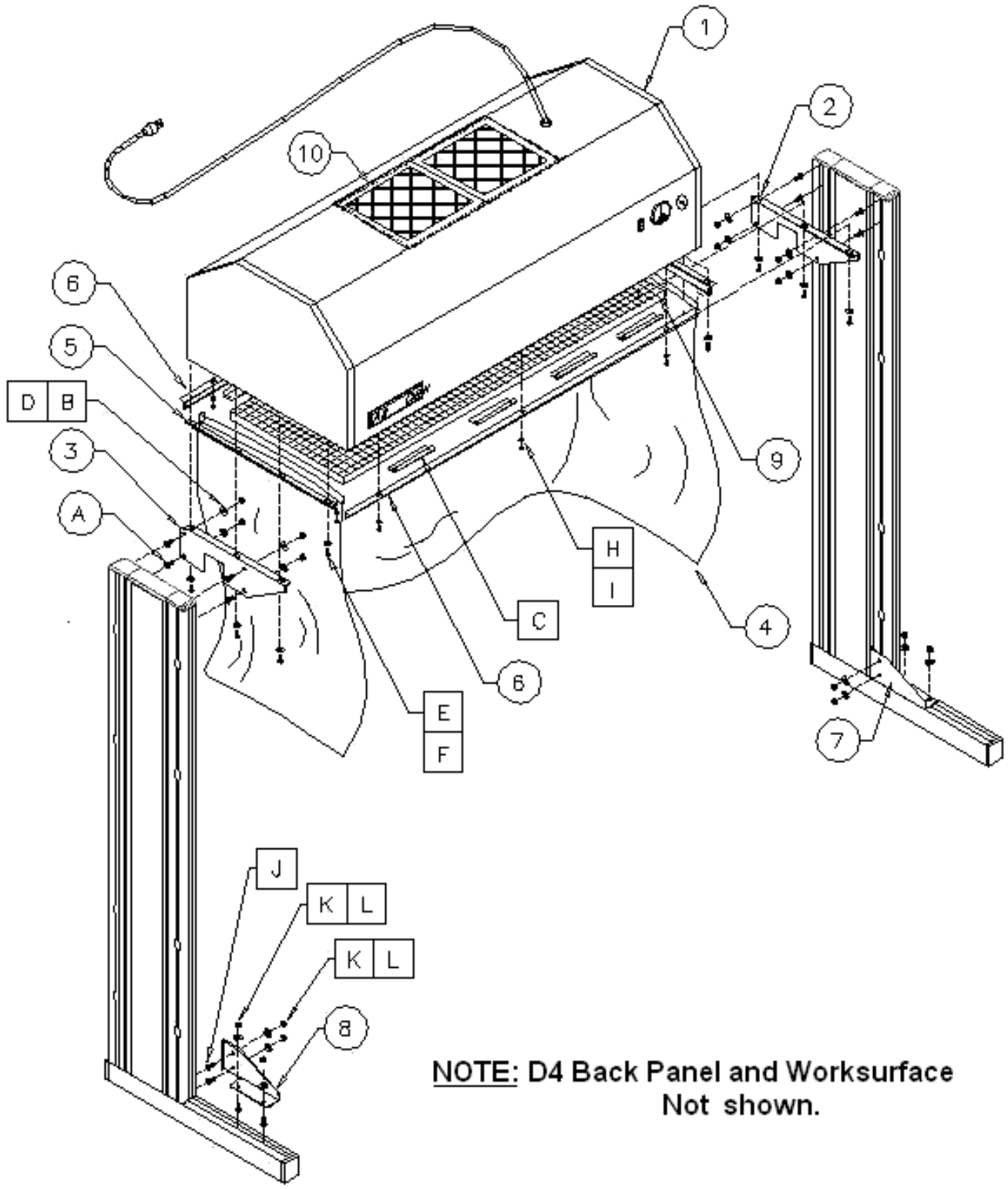
| Item | Description | Qty. | Item | Description | Qty. |
|------|-----------------------------|------|------|------------------------|------|
| A | Bolt 5/16-18x.75 Sq Head | 8 | F | Washer, 1/4-20 Flat | 8 |
| B | Washer, 5/16 Flat | 8 | G | Washer, 1/4 Split Lock | 8 |
| C | VFS Egg Crate Bracket 6.00L | 8 | H | Screw, 10-32 x 1/2 PPH | 6 |
| D | Nut, 5/16-18 Hex Keps | 8 | I | Washer, Flat #10 Zinc | 6 |
| E | Screw, 1/4-20x5/8 MS PPH | 8 | | | |

Hardware Kit 290093-HWR

| Item | Description | Qty. | Item | Description | Qty. |
|------|--------------------------|------|------|-----------------------|------|
| J | Bolt 5/16-18x.75 Sq Head | 8 | L | Nut, 5/16-18 Hex Keps | 8 |
| K | Washer, 1/4 Flat | 8 | | | |

Before beginning the assembly of the AirClean unit the worksurface height needs to be determined. For optimum efficiency IAC recommends that the worksurface is placed no more than 36 inches from the bottom of the AirClean housing. The top support brackets and the back panel noticed in the D4 Assembly Instructions need to be installed 1.25" below the desired finished height of the worksurface.





**NOTE: D4 Back Panel and Worksurface
Not shown.**

MVF AirClean Assembly:

NOTE: If the MVF AirClean unit is being installed on an existing D4 Bench go to step 1.

NOTE: If the MVF is going on a new bench assemble the D4 Bench portion by using the D4 Assembly Instructions included with your AirClean unit. Also note work surface height requirements on page 4.

Step 1:

Once the D4 bench for the MVF AirClean unit is assembled install the upright Base Support Brackets items 7 & 8 and the MVF AirClean mounting brackets items 2& 3 using hardware shown on pages 4 & 5.

Step 2:

Once MVF air clean mounting brackets are installed, and if you have ordered a vinyl curtain you will need to turn the MVF AirClean unit over (this will require at least two persons to turn the MVF AirClean over). Placing it upside down, install the "left & right" side velcro brackets using 1/4-20x5/8 screws and 1/4-20 flat washers, items E and F shown on pages 4 & 5.

PLEASE NOTE: Install only the front screw on each of the "left & right" side Velcro brackets at this time. The other three holes on each side will be used to install the MVF AirClean to the uprights.

NOTE: It is recommended that **no less** than four persons or a powered lift be used to install the MVF AirClean onto the uprights.

Step 3:

Place the MVF AirClean on top of the MVF AirClean mounting brackets. Install the MVF AirClean to the mounting brackets using hardware 1/4-20x5/8 screws and 1/4-20 flat washers, items E and F as shown on pages 4 & 5.

Step 4:

Install the "front and rear" Velcro brackets at this time if you ordered a vinyl curtain using hardware 10-32 x 1/2 screws, item H and #10 flat washers, item I as shown on pages 4 & 5.

PLEASE NOTE: The front Velcro bracket is only needed if you ordered a front vinyl curtain.

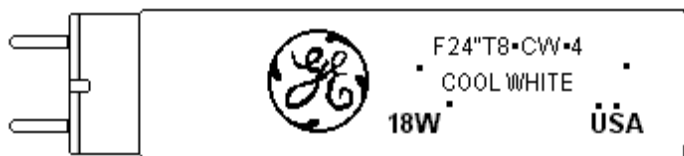
Step 5:

Install the Vinyl curtain to the Velcro brackets as shown on page 5.

AirClean Light Tubes installation:

The MVF AirClean unit uses four fluorescent double pin tubes. Installation is shown in steps 1, 2 and 3 on the next page.

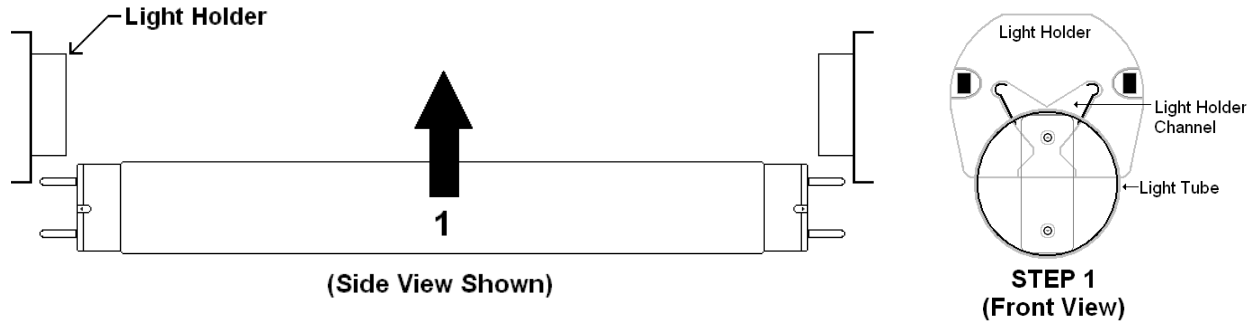
Light tubes recommended are Double Pin, F24 T8 CW 4 18W



AirClean Tubes installation cont ...

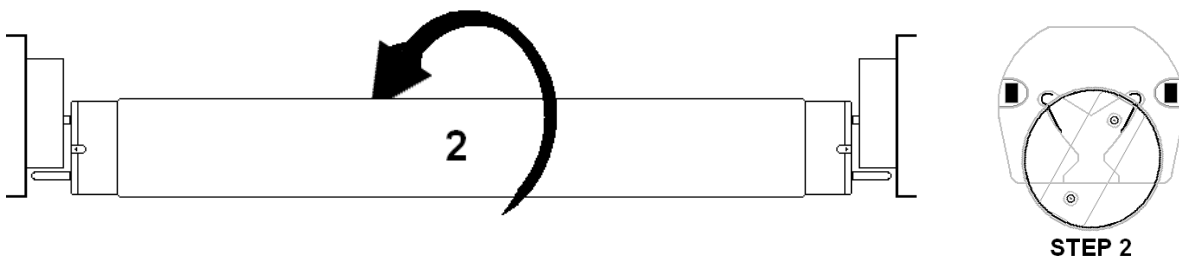
Step 1:

Install the light tubes into the light tube holders located on the inside of the AirClean unit by inserting one of the two pins on each end of the light tube into the light tube holder.



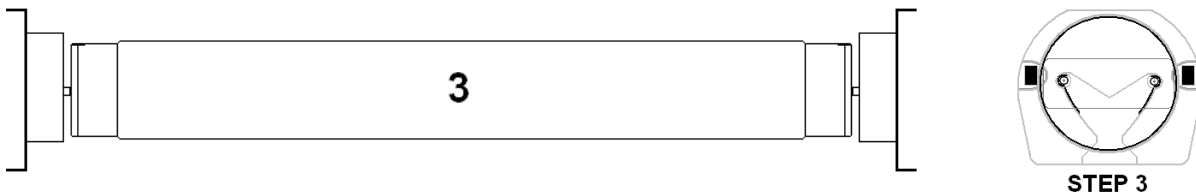
Step 2:

Slowly turn the light tube into the light holder channel and insert the second pin into the light tube's other channel in the light tube holder.



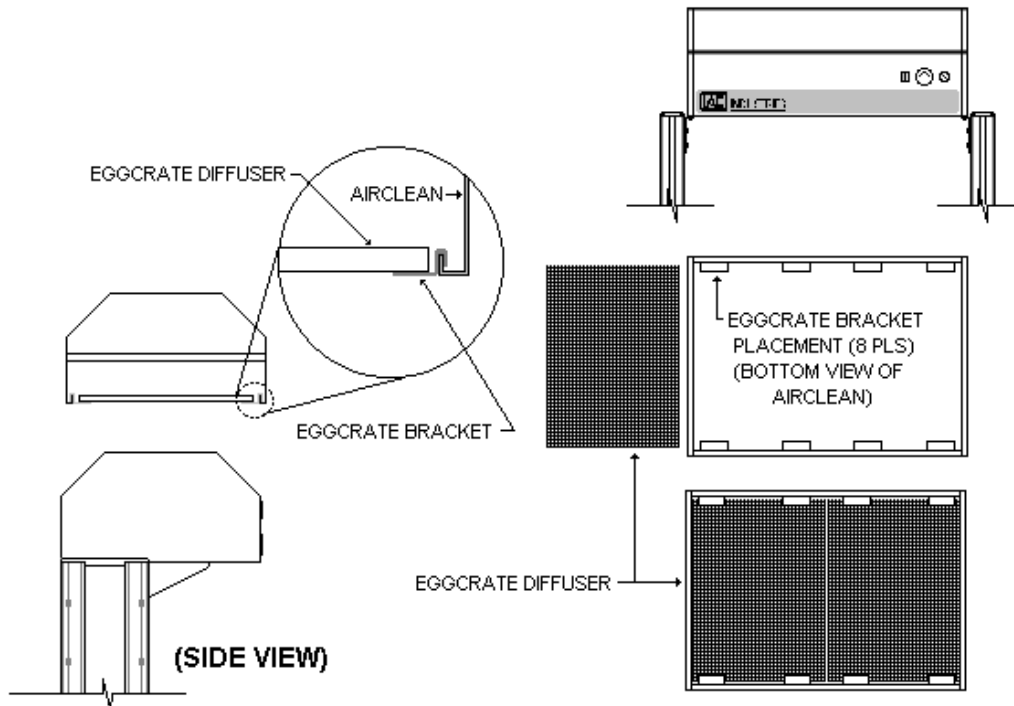
Step 3:

Continue to turn the light tube in the light tube holders until the light tube locks both pins on each end into place, making sure all four pins (two the left and two on right) are in the light tube holders.



MVF AirClean Diffuser Installation:

Install the egg crate diffusers by installing eight egg crate brackets to the AirClean inside lip as shown below. Install the egg crates diffusers as shown.



Your MVF unit is now assembled and ready for operation. Please read the MVF Operating Manual included with this unit completely before placing it into service. If you cannot find the Operating Manual please contact the factory at 1-800-989-1422 for a new copy.